



3G1215X-XX-X ANTENNA FAMILY

GPS L1/L2 FRPA

The 3G1215X-XX-X antenna product family provides Global Positioning System (GPS) signal reception in the L1 and L2 frequency bands. The Fixed Reception Pattern Antenna (FRPA) mounting footprint allows for easy integration onto new and existing platforms. Rugged enclosures enable these antennas to withstand harsh environmental conditions seen in military, aerospace, and other applications.

Antcom can customize this product family to meet your specific requirements. Please contact us for more information about customization options.

BENEFITS

- Rugged GPS L1/L2 antenna for assured position, navigation, and timing (PNT)
- Standard FRPA mounting footprint allows easy platform integration
- Various standard options available and customizable options are available for order

FEATURES

- GPS L1/L2 with M-Code support
- FRPA footprint with thru-hole mount or bottom-mount
- Passive or active (amplified) configurations available
- Active configurations offer 2-stage integrated bandpass filtering with diode limiters
- Connector options available
- Paint color options available



OPTIONS

- | | |
|-----------|--|
| COLOR | <ul style="list-style-type: none">• Gloss White• Lusterless Gray• Camo Green• Lusterless Black• Desert Tan |
| CONNECTOR | <ul style="list-style-type: none">• SMA• TNC• Bulkhead TNC• Bulkhead N |
| LNA GAIN | <ul style="list-style-type: none">• With 33 dB LNA• With 40 dB LNA• Without LNA |

ELECTRICAL

Frequency Range:	
L1 GPS	1575.42 ± 12 MHz
L2 GPS	1227.60 ± 12 MHz
VSWR	<2.0:1
Impedance	50 ohms
Polarization	RCHP

MECHANICAL & ENVIRONMENTAL

Designed to:

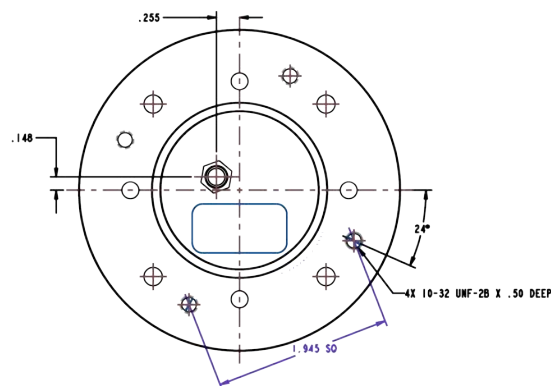
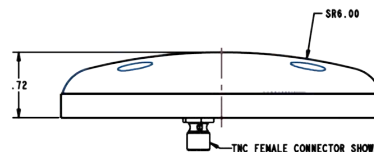
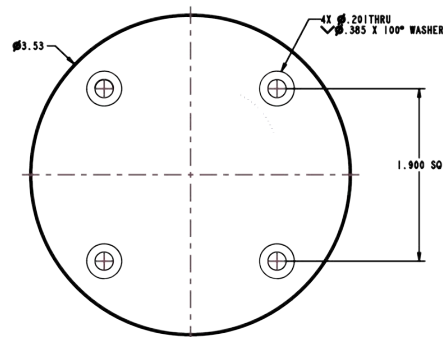
Weight	6.8 oz
Temperature	-55°C TO +85°C
Altitude	70,000 ft
Vibration	20 Grms

TYPICAL LNA PERFORMANCE

LNA Gain	See Options Table
LNA Noise Figure	3.5 dB
LNA P1dB Out	+13 dBm
LNA DC Power	(3.8 - 15) V <70 mA

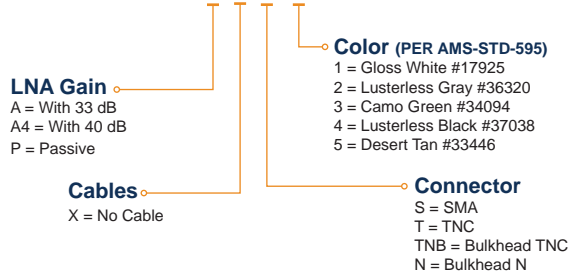
LIMITING & FILTERING

Power Handling	1 Watt CW
-----------------------	-----------



PART NUMBER DECODER

3G1215X XX X



CONTACT ANTCOM

Phone: +1-310-782-1076
 Fax: +1-310-782-1086
 Email: sales.pi.antcom@antcom.com
 Web: antcom.com

