



42G15X-XX-X ANTENNA FAMILY

ARINC Footprint GPS L1 Antenna

The 42G15X-XX-X product is a GPS L1 antenna designed to be compatible with ARINC 743 mounting hole and footprint requirements. An O-ring seal between the antenna and your platform ensures easy installation.

The product family is available in passive and active (amplified) configurations. The active configuration offers 2-stage integrated bandpass filtering for high out-of-band rejection, and limiter diodes to protect sensitive receiver electronics. The passive configuration is best suited to applications where the antenna's location is close to the GNSS receiver, offering the lowest insertion loss to minimize your system's noise figure.

Antcom can customize this product family to meet your specific requirements. Please contact us for more information about customization options.

BENEFITS

- Rugged GPS L1 antenna
- Standard ARINC mounting footprint for easy platform integration

FEATURES

- GPS L1 with M-Code support
- ARINC 743 compatible mounting holes and footprint
- Passive or active (amplified) configurations available
- DC power input through RF connector
- Connector options available
- Paint color options available



OPTIONS

COLOR

- Gloss White
- Lusterless Gray
- Camo Green
- Lusterless Black
- Desert Tan

CONNECTOR

- S: SMA; B: BNC
- M: MCX; MM: MMCX
- N: N; NB:N-Bulkhead
- T, TNC: TB: TNC-Bulkhead

LNA GAIN

- With 33 dB LNA
- With 40 dB LNA
- Without LNA

ELECTRICAL

Frequency Range:	
L1 GPS	1575.42 ± 12 MHz
VSWR	<2.0:1
Impedance	50 ohms
Polarization	RHCP

MECHANICAL & ENVIRONMENTAL

Designed to:

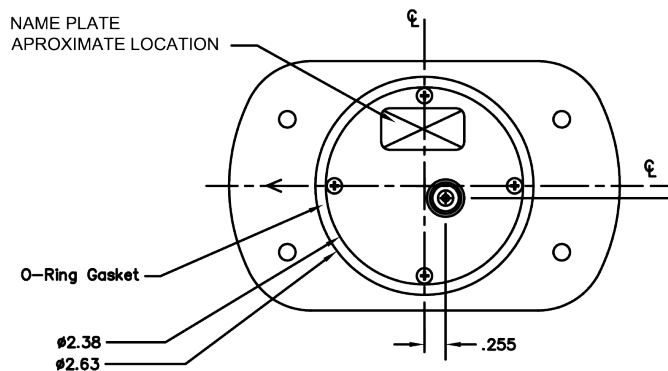
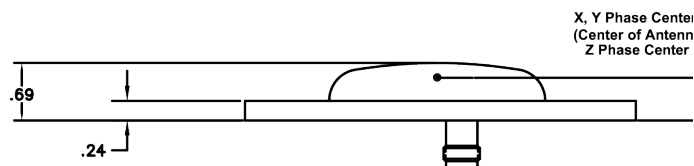
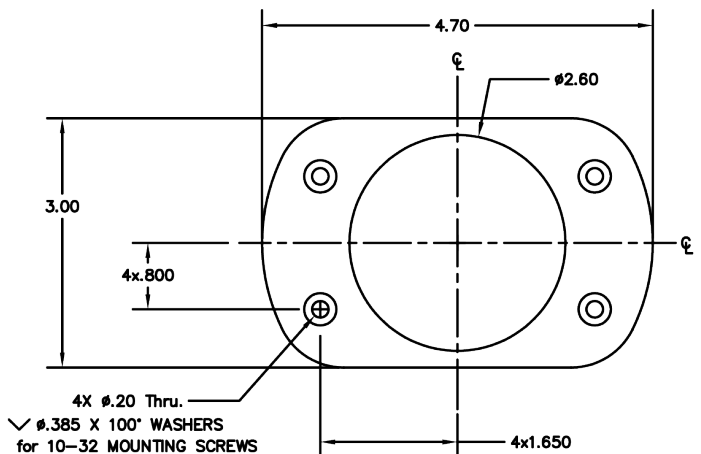
Weight	7.0 oz
Temperature	-55°C TO +85°C
Altitude	70,000 ft
Vibration	> 30 Grms

TYPICAL LNA PERFORMANCE

LNA Gain	See Options Table
LNA Noise Figure	3.5 dB
LNA P1dB Out	+13 dBm
LNA DC Power	(3.8 - 15) V <35 mA

LIMITING & FILTERING

Power Handling	1 Watt CW
----------------	-----------



PART NUMBER DECODER

42G15X-XX-X

LNA Gain
 A = With 33 dB
 A4 = With 40 dB
 P = Passive

Color (PER AMS-STD-595)
 1 = Gloss White #17925
 2 = Lusterless Gray #36320
 3 = Camo Green #34094
 4 = Lusterless Black #37038
 5 = Desert Tan #33446

Connector
 S = SMA; B = BNC
 M = MCX; MM = MMCX
 N = N; NB = N-Bulkhead
 T = TNC; TB = TNC-Bulkhead

CONTACT ANTCOM

Phone: +1-310-782-1076
 Fax: +1-310-782-1086
 Email: sales.pi.antcom@antcom.com
 Web: antcom.com

